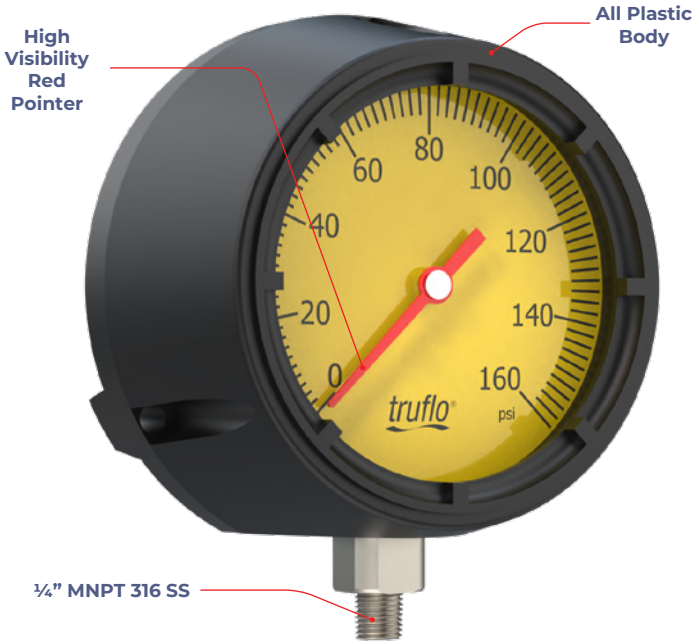


Truflo® — OBS-GO4 SERIES

4½" Plastic | 316 SS Pressure Gauge

- ✓ Extra Large 4½" Dial
- ✓ Industry's Most Accurate | ± 0.75%
- ✓ Suitable for Corrosive Environments



Product Description

Seeing is Believing

The OBS-GO4 Series Pressure Gauge is the industry's most accurate pressure gauge on the market. With a Thermoplastic Polypropylene enclosure, OBS-GO4 Series gauges were engineered to last in the most corrosive environments.

A ¼" NPT 316 SS connection comes standard on all OBS-GO4 pressure gauges. This connection allows for them to be a perfect mate with our GI Series Gauge Guards when dealing with extremely corrosive chemicals.

Gauge guards are utilized to protect the pressure gauge from any corrosive media in the process system via an isolator.

Each OBS-GO4 pressure gauge comes with a super bright yellow faceplate and a bright red visual pointer. These colors paired with the large 4½" dial size, allow for the OBS-GO4 pressure gauge to be easily readable from a distance.

Features

- ✓ ¼" MNPT 316 SS Connection
- ✓ Dual Scale | Psi | Bar
- ✓ High Visibility Red Pointer | Yellow Dial
- ✓ Perfect Mate for GI Series Gauge Guards

truflo®

Corrosion Resistant Casing

- ✓ Corrosion Resistant PP Housing
- ✓ High Impact Polycarbonate Lens

Extra Large Display

- ✓ 4½" Dial Size
- ✓ Bright Yellow Background
- ✓ High Visibility Red Pointer
- ✓ 0-60 | 0-100 | 0-160 Psi

GI Series Gauge Guard

- ✓ Protect Internals of Gauge from Corrosive Liquids
- ✓ PTFE Teflon® Bonded Diaphragm
- ✓ PVC | PP | PVDF



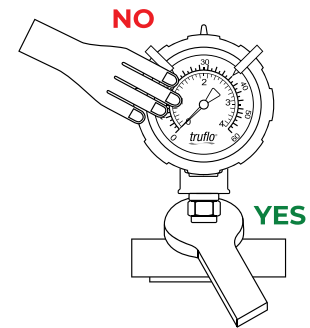


Technical Specifications

Mounting	Direct Mount Bottom Connection
Process Connection	¼" (M)NPT
Measuring Principle	Bourdon Tube 316SS
Pressure Ranges Psi	0-60 0-100 0-160
Lens	High Impact Polycarbonate
Accuracy	± 0.75%
Operating Temperature	PP: 190°F 88°C
Dial Diameter	4½"
Standards & Approvals	CE FCC RoHS Compliant

Installation Instructions

- Do not tighten by grasping the case of the gauge as this may cause damage. **Always Pressure Test Connections for Leaks** with Water Prior to Use on Chemical Service.
- Before installing the OBS-GO4 Series pressure gauge, ensure attention is given to the Process Liquid, Chemical Compatibility, Temperature, Vibration, Pressure Spikes, and other climatic and application conditions that may adversely affect the performance.
- The user shall ensure that the correct gauge pressure range and the correct materials of construction are selected.



Temperature | Pressure Graphs | Non-Shock

NOTE: The pressure/temperature graphs are specifically for the Truflo® Pressure Gauges, during system design the specifications of all components must be considered.

Model Selection

OBS-GO4 — Pressure Gauge			
Size	Part Number	Material	Range
¼" NPT 316SS	OBS-GO4-0-60	PP 316SS	0-60 Psi
¼" NPT 316SS	OBS-GO4-0-100	PP 316SS	0-100 Psi
¼" NPT 316SS	OBS-GO4-0-160	PP 316SS	0-160 Psi

½" FNPT is standard

Add Suffix -

'M' - Male ½" NPT

'F' - Flanged

'S' - ½" Socket

Consult Factory for Flanged Pricing | Alternative Pressure Ratings

■ = PP

