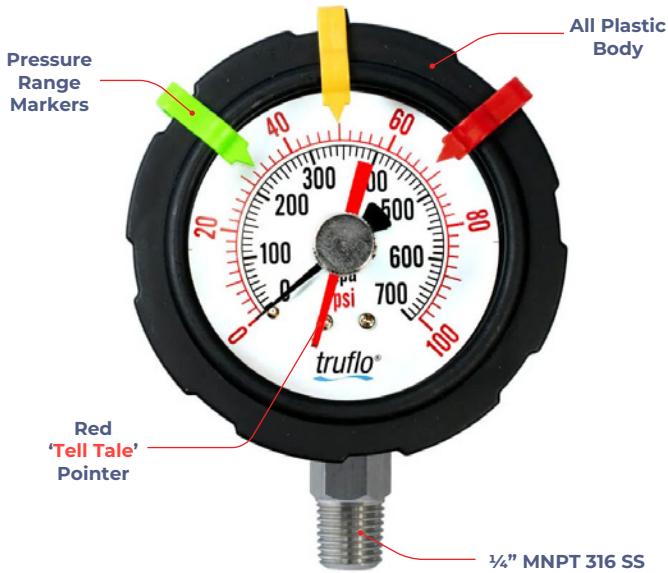


Truflo® — OBS-TT SERIES

'Tell Tale' Pressure Gauge

- ✓ Registers Pressure Spikes
- ✓ Industry's Most Accurate | $\pm 0.75\%$
- ✓ Suitable for Corrosive Environments



Product Description

The OBS-TT Series Pressure Gauge is the industry's most accurate pressure gauge on the market. With a Thermoplastic Polypropylene enclosure, OBS-TT Series gauges were engineered to last in the most corrosive environments.

A 1/4" NPT 316 SS connection comes standard on all OBS-TT pressure gauges. This connection allows for them to be a perfect mate with our GI Series Gauge Guards when dealing with extremely corrosive chemicals.

Gauge guards are utilized to protect the pressure gauge from any corrosive media in the process system via an isolator.

The OBS-TT Pressure Gauges come factory pre-filled, allowing us to achieve an industry leading accuracy of $\pm 0.75\%$.

Each OBS-TT Pressure Gauge is equipped with Color Range Tabs. These 3 movable red, yellow and green range tabs are designed to act as a visual pressure alert for bag or filter change-outs.



Features

- ✓ Large 2½" Dial
- ✓ All Plastic | Completely Corrosion Resistant Externals
- ✓ Dual Scale | Psi | Bar | 'Tell Tale' Pointer
- ✓ Suitable for Pulsing Applications
- ✓ Perfect Mate for GI Series Gauge Guards

truflo®

Corrosion Resistant Casing

- ✓ Corrosion Resistant PP Body
- ✓ High Impact Polycarbonate Lens
- ✓ Perfect for Corrosive Environments where Stainless is Unreliable

Pressure Range Markers

- ✓ Notification for Filter | Strainer Change-Out
- ✓ Easily Customizable to your Process Conditions
- ✓ Eliminates Manual Marking on Gauge
- ✓ Red | Yellow | Green Markers

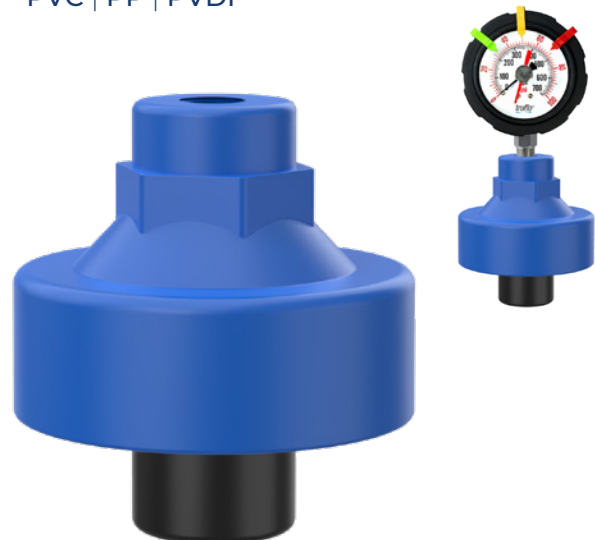
Factory Pre-Filled

- ✓ Reduces Installation Time
- ✓ Increases Accuracy
- ✓ Eliminates the Mess of Self-Filling
- ✓ Removes Air Bubble Issues



GI Series Gauge Guard

- ✓ Protect Internals of Gauge from Corrosive Liquids
- ✓ PTFE Teflon® Bonded Diaphragm
- ✓ PVC | PP | PVDF



Truflo® — OBS-TT SERIES

'Tell Tale' Pressure Gauge



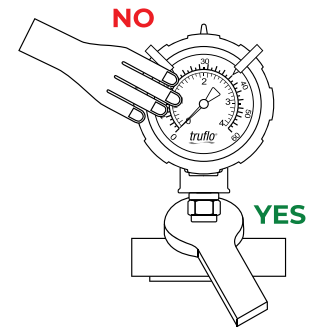
Technical Specifications

Mounting	Direct Mount Bottom Connection
Process Connection	¼" (M) NPT
Measuring Principle	Bourdon Tube 316SS
Pressure Ranges Psi	0-60 0-100 0-160
Lens	High Impact Polycarbonate
Filling	Glycerin Silicon* Halocarbon*
Accuracy	± 0.75%
Operating Temperature	PP : 190°F 88°C
Dial Diameter	2½"
Standards & Approvals	CE FCC RoHS Compliant

*Optional

Installation Instructions

- Do not tighten by grasping the case of the gauge as this may cause damage. **Always Pressure Test Connections for Leaks** with Water Prior to Use on Chemical Service.
- Before installing the OBS-TT Series pressure gauge, ensure attention is given to the Process Liquid, Chemical Compatibility, Temperature, Vibration, Pressure Spikes, and other climatic and application conditions that may adversely affect the performance.
- The user shall ensure that the correct gauge pressure range and the correct materials of construction are selected.



Temperature | Pressure Graphs | Non-Shock

NOTE: The pressure/temperature graphs are specifically for the Truflo® Pressure Gauges, during system design the specifications of all components must be considered.

Model Selection

OBS-TT — "Tell Tale" Pressure Gauge		
Size	Part Number	Material
¼" NPT 316SS	OBS-TT-PP-0-60	PP 316SS
¼" NPT 316SS	OBS-TT-PP-0-100	PP 316SS
¼" NPT 316SS	OBS-TT-PP-0-160	PP 316SS

½" FNPT is standard

Add Suffix -

'M' - Male ½" NPT

'F' - Flanged

'S' - ½" Socket

Consult Factory for Flanged Pricing | Alternative Pressure Ratings

■ = PP

